





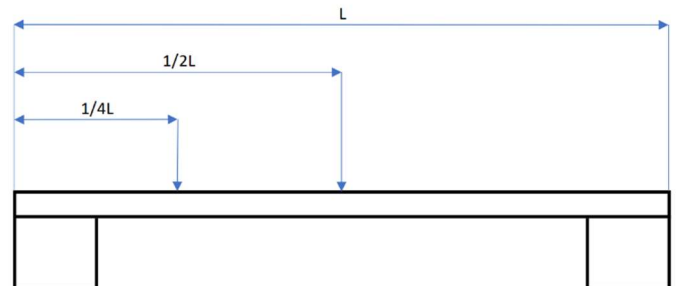
TECHNICAL DETAILS

-  **Width: 5900 mm**
-  **Length: 8020 mm**
-  **Weight: 11,618.6 kg**






CAPACITY

-  **WLL:**
- 1/2L = 75t**
- 1/4L = 2x 60t**

*considering 800x800mm supports & load base



OPTIONAL

-  **Suitable rigging**
-  **Suitable axle lines & PPU**
-  **Suitable cranes**
-  **Certificates**
-  **Different size stools & spacers**

CONTACT

Please consult the Q3 Group Engineering department for more details:

Plaza 25C
4782 SL Moerdijk
T: +31 10 261 33 30
E: operations@q3-group.com

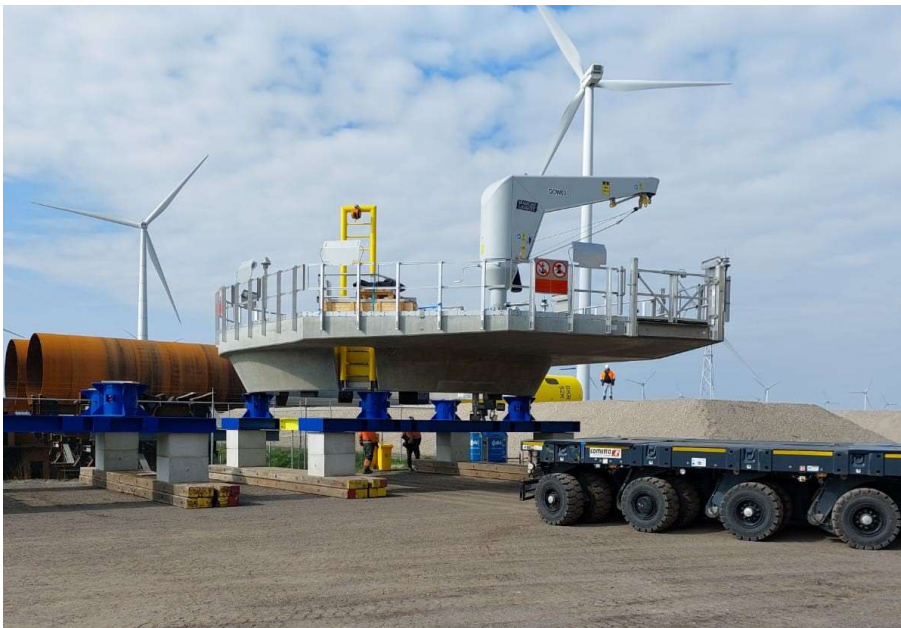


Figure 1, Storage on height of concrete working platform for SPMT-transport

OPTIONAL

Q3 offers suitable lifting equipment, rigging equipment, certificates and expertise in order to use the load spreader to its full potential. As shown on both figures, the load spreader is also suitable for SPMT-transport, resulting in a multi-purpose piece of equipment.

CAPABILITY

The Q3 load spreader is able to support 75 – 120 tons when the load spreader is supported on both ends. When laying flat on the ground, the capacity will increase massively.

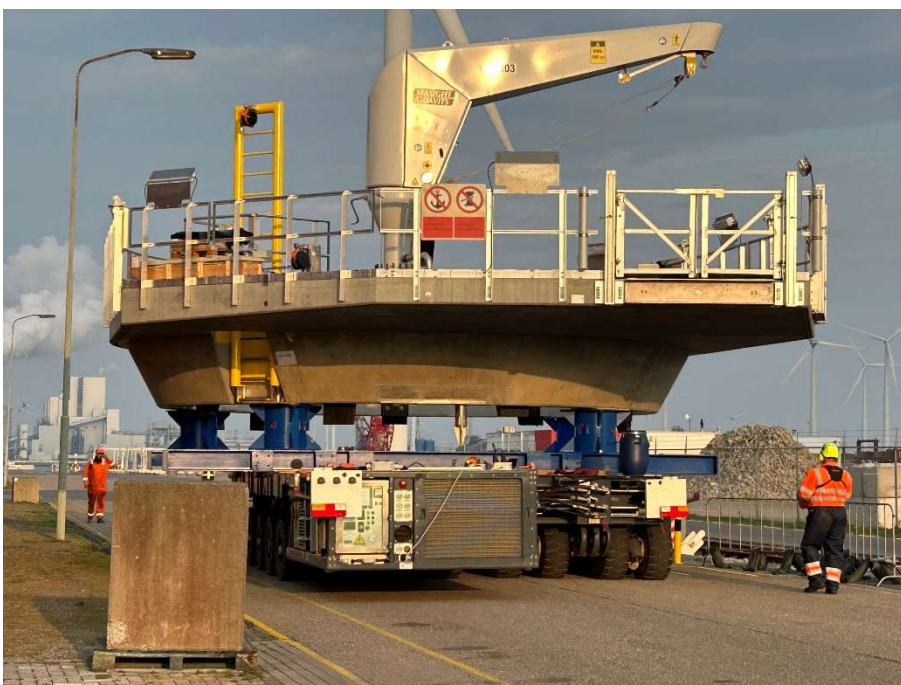


Figure 2, SPMT-transport of concrete working platform

ADJUSTABILITY

In order to spread the load evenly, different size spacers as well as different size stools can be provided, resulting in an optimal fitment for all heavy objects to be supported.